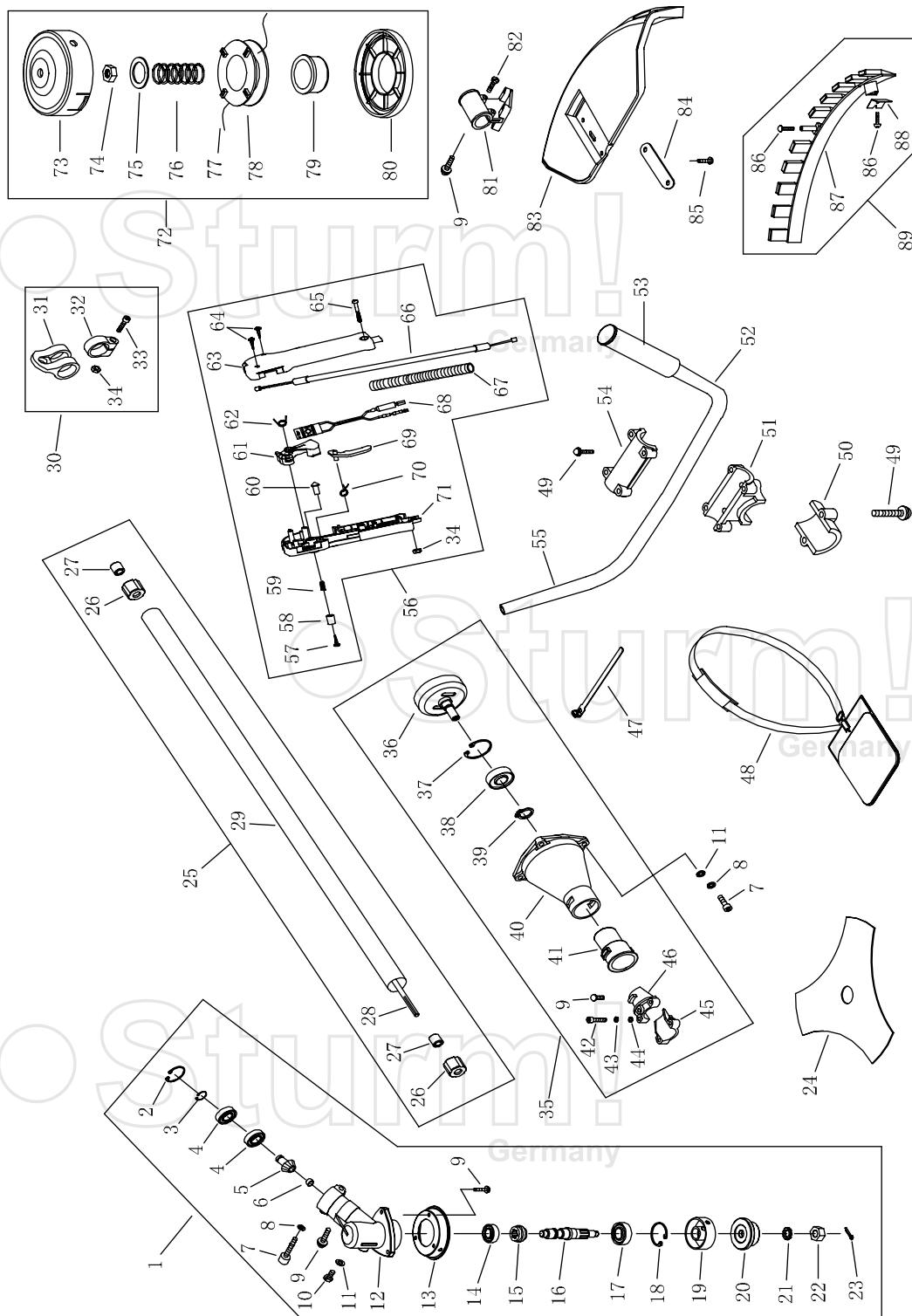


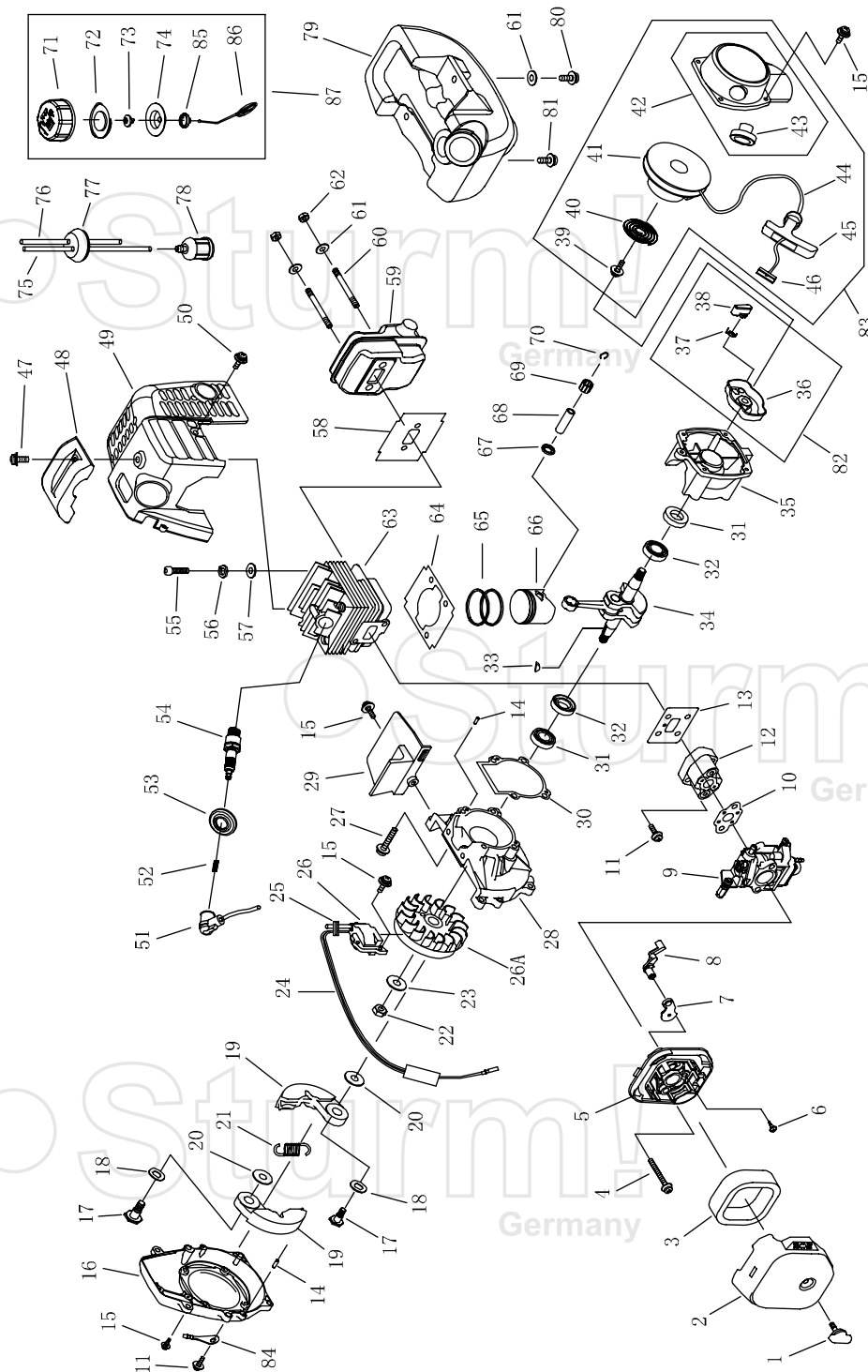
BT8926D



NO.	DESCRIPTION	NO.	DESCRIPTION	NO.	DESCRIPTION
1	GEAR CASE ASS'Y	31	HARNESS CLAMP	61	HANDGRIP
2	STOP RING	32	CLAMP	62	SPRING
3	STOP RING	33	SCREW M5X20	63	BOX, RIGHT
4	BEARING 6000-2RZ/P5	34	NUT M5	64	SCREW ST2.9X18
5	PINION	35	CLUTCH COMP.	65	SCREW M5X30
6	STEEL PLATE	36	CLUTCH DRUM COMP.	66	CABLE COMP.
7	CAPSCREW M6X20	37	STOP RING	67	TUBE
8	WASHER	38	BEARING 6202-2RZ/P5	68	STOP BUTTON COMP.
9	SCREW M5X12	39	STOP RING	69	HANDGRIP
10	BOLT M6X12	40	LINKER	70	SPRING
11	WASHER	41	RUBBER COVER	71	BOX, LEFT
12	GEAR CASE	42	SCREW M5X25	72	NYLON CUTTER HEAD
13	BLADE COVER	43	WASHER	73	CASE
14	BEARING 6000/P5	44	WASHER	74	LEFT NUT
15	GEAR	45	CLAMP B	75	WASHER
16	GEAR SHAFT	46	CLAMP A	76	SPRING
17	BEARING 6002-2RZ/P5	47	WIRE CLAMP BAND	77	NYLON CORD
18	STOP RING	48	HARNESS ASS'Y	78	CORD HOLDER
19	HOLDER A	49	BOLT M5X25	79	PLATEN
20	HOLDER B	50	CAP, LOWER	80	COVER
21	WASHER	51	BRACKET	81	BRACKET
22	LEFT NUT	52	HANDLE	82	SCREW M5X30
23	PIN 2X16	53	GRIP LEFT	83	SAFETY GUARD
24	BLADE	54	CAP, UPPER	84	WASHER
25	PIPE COMP.	55	HANDLE	85	SCREW M5X16
26	RUBBER COVER	56	LEVER ASS'Y	86	SCREW ST4.2X16
27	OIL-BEARING	57	SCREW ST2.9X13	87	GUARD
28	DRIVE SHAFT	58	BUTTON	88	BLADE
29	PIPE	59	SPRING	89	GUARD ASS'Y
30	HOLDER ASS'Y	60	CLOCK PIN		

RU61227-1

Sturm!
Germany



ENGINE FOR BT8926D

NO.	DESCRIPTION	NO.	DESCRIPTION	NO.	DESCRIPTION
1	SCREW	30	CRANK CASE GASKET	60	BOLT
2	CLEANER OUTSIDE COVER	31	OIL SEAL	61	WASHER
3	CLEANER ELEMENT	32	BALL BEARING 6001/P5	62	NUT M5
4	SCREW M5X55	33	KEY	63	CYLINDER
5	CLEANER INSIDE COVER	34	CRANK SHAFT COMP	64	CYLINDER WASHER
6	SCREW ST4.2X12-F-H	35	REAR HALF CRANK CASE	65	PISTON RING
7	CHOKE	36	STARTER PULLEY ASS'Y	66	PISTON
8	CHOKE HANDLE	37	STARTER PAWL SPRING	67	STOP RING
9	CARBURETOR	38	STARTER PAWL	68	PISTON PIN
10	GASKET	39	SCREW M5,10	69	NEEDLE BEARING
11	SCREW M5X20	40	RECOIL SPRING	70	PISTON PIN CIRCLLET
12	INLET MANIFOLD	41	STARTER ROPE REEL	71	FUEL TANK LID
13	CYLINDER WASHER	42	RECOIL STARTER BODY	72	GASKET
14	PIN	43	ROPE GUIDE	73	AIRINLET MOUTH
15	SCREW M4X16	44	ROPE	74	INSIDE COVER
16	FAN COVER	45	STARTER HANDLE	75	OUTLET FUEL PIPE
17	CLUTCH STEP SCREW	46	GASKET	76	INLET FUEL PIPE
18	WASHER	47	SCREW M5X14	77	PRIMARY CORD GROMMET
19	CLUTCH SHOE COMP	48	COVER	78	CLEANER
20	WASHER	49	COVER	79	FUEL TANK
21	CLUTCH SPRING	50	SCREW M4X12	80	SCREW M5X16
22	NUT M8X1	51	PLUG CAP	81	SCREW M5X16
23	WASHER	52	CLICK SPRING	82	STARTER PULLEY ASS'Y
24	STOP CORD COMP	53	PLUG COVER	83	STARTER
25	PRIMARY CORD GROMMET	54	SPARK PLUG	84	FLASH PAN
26	MAGNETO STATOR	55	SCREW M5X20	85	LID
26A	MAGNETO ROTOR	56	WASHER	86	CHAIN
27	SCREW M5X25	57	WASHER	87	FUEL TANK LID COMP
28	FRONT HALF CRANK CASE	58	GASKET		
29	GUIDE PLATE	59	MUFFLER COMP		

RU61227-1